

Ithell Colquhoun Investment Opportunity

Deal Basics

Bundle of seven pieces by Ithell Colquhoun

Investment size: \$385k

Duration: 3 - 5 years

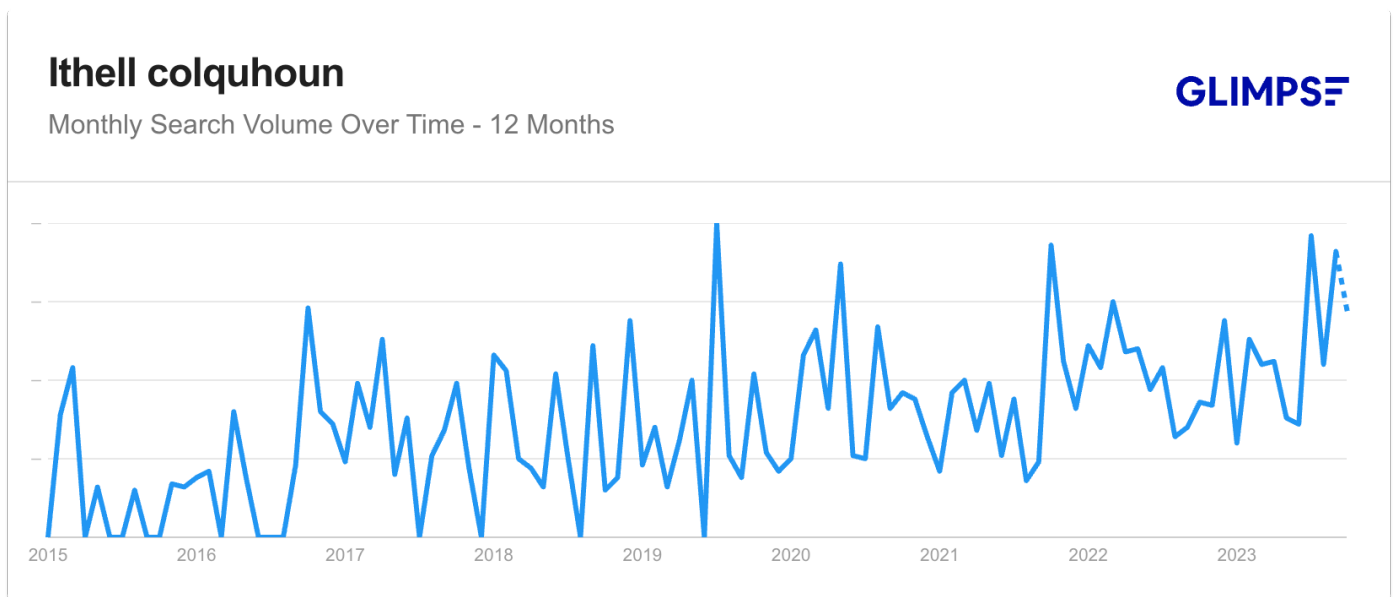
Fees: 1.5% management | 20% carry

[Deck](#)

Deal Overview

Through our art broker and gallery connections in London, we can acquire a bundle of seven works of art by contemporary British artist Ithell Colquhoun. It's not public knowledge yet, but one of her pieces has been pre-selected for an exhibition at both the Tate St Ives and Tate Modern art galleries in 2025.

The artist is growing in both favor and popularity, evidenced by a recent [collaboration](#) between her estate and Dr Marten to make boots and bags.



Based on her increasing popularity, we would expect 20% annual appreciation of her works over the next several years regardless of this exhibition.

Strictly Confidential - By reading this document, you agree to keep the contents confidential

However, exhibitions like this typically increase artist valuations by 50% to 100%.

Further increasing our edge, we have also secured a trade/bundle discount on the works, reducing our cost by 20%.

Based on conservative calculations, we estimate our initial \$385k investment will net \$1.2m after the gallery exhibit. This will result in 46% IRR, assuming three years from entrance to exit.

Strictly Confidential - By reading this document, you agree to keep the contents confidential

The artwork



Ithell Colquhoun
Demeter and Persephone, 1928
oil on canvas laid on board
11 5/8 x 10 5/8 in. | 29.5 x 26.9 cm



Ithell Colquhoun
Volcanic Landscape, 1968
enamel on board
30 x 44 in. | 76 x 111.5 cm

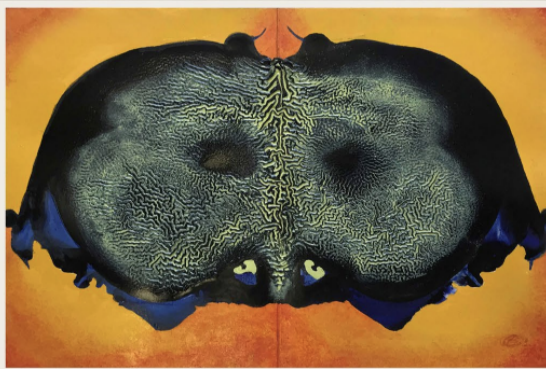


Ithell Colquhoun
Hyacinth and Cyclamen, 1934
watercolour on paper
9 4/5 x 10 1/5 in. | 24.9 x 25.9 cm



Ithell Colquhoun
Amaryllis, 1933
pencil and watercolour on paper
11 1/2 x 7 5/8 in. | 29.2 x 19.4 cm

Strictly Confidential - By reading this document, you agree to keep the contents confidential



Ithell Colquhoun
Elemental, 1971
oil on paper
5 3/4 x 9 in. | 15 x 23 cm



Ithell Colquhoun
Crater's Edge, 1970
enamel on board
12 x 8 1/2 in. | 30.5 x 21.7 cm



Ithell Colquhoun
Untitled, c. 1920's
Pencil on paper
16 7/8 x 11 3/4 in. | 43 x 30 cm

Financials

Piece	Cost	Value today	Standard appreciation	Tate boost	Value 2026
			0.2 per yr	50%	
Demeter and Persephone, 1928	£60,000	£90,000	£65,520	£77,760	£233,280
Volcanic Landscape, 1968	£140,000	£180,000	£131,040	£155,520	£466,560
Hyacinth and Cyclamen, 1934	£12,000	£18,000	£13,104	£15,552	£46,656
Amaryllis, 1933	£12,000	£18,000	£13,104	£15,552	£46,656
Elemental, 1971	£22,000	£35,000	£25,480	£30,240	£90,720
Crater's Edge, 1970	£33,000	£40,000	£29,120	£34,560	£103,680
Untitled, c. 1920's	£1,000	£2,000	£1,456	£1,728	£5,184
Commission	£28,000				
Tax	£10,000				
Total	£318,000	£383,000			£992,736
USD	\$385,529	\$464,332			\$1,203,550
Immediate ROI	20%				
Total ROI	212%				
IRR	46%				

Investment theses

Base case

Rarity and Exclusivity: Colquhoun's works are relatively rare, which tends to drive up demand among collectors and museums. This scarcity factor can potentially result in higher returns on investment over time.

Historical Significance: As an artist closely tied to the Surrealist movement and known for her occult interests, Colquhoun's work has historical value. The growing academic and institutional focus on such artists could increase demand.

Undervaluation: Compared to other artists of her era and genre, works by Colquhoun may currently be undervalued. This provides an opportunity for investors to acquire assets at a lower price point, with the expectation of future appreciation.

Cultural Resurgence: There is a resurgence of interest in women artists and mystical themes, both of which Colquhoun embodies. This sociocultural trend could fuel a re-evaluation and higher valuations for her works.

Global Market: The art market is increasingly global, enabled by technology and online platforms that can introduce Colquhoun's works to new collectors outside her home market, increasing demand.

Long-Term Investment: Art is often considered a long-term investment, with works by historically significant artists generally appreciating over time. As Colquhoun's reputation grows, so does the likelihood that her works will continue to appreciate.

Impact of Hanging at the Tate Modern

Having a piece displayed at a prestigious institution like the Tate Modern in London would significantly enhance the profile and market value of Ithell Colquhoun's works. Here's a breakdown of the expected impact:

1. **Institutional Validation:** A display at the Tate Modern serves as a strong institutional endorsement, elevating her works in both academic and commercial circles.
2. **Increased Visibility:** The Tate Modern is one of the world's most visited art museums, thereby exposing Colquhoun's work to a large and diverse audience. This increased visibility can drive up demand.
3. **Global Recognition:** The international reputation of the Tate Modern could attract global buyers, thus broadening the market for her works and potentially commanding higher prices.
4. **Media Coverage:** The inclusion in a Tate Modern exhibition would likely generate substantial media attention, further boosting awareness and interest.
5. **Market Confidence:** With increased validation and visibility, existing and potential investors may feel more secure in the perceived value of her works, leading to higher sale prices and auction results.

Strictly Confidential - By reading this document, you agree to keep the contents confidential

Quantifying the exact percentage increase in value is challenging due to various market dynamics, but it is reasonable to expect a substantial uplift. In similar scenarios, artists have experienced value increases ranging from 20% to 50%, and sometimes even higher, depending on other market factors.

Strictly Confidential - By reading this document, you agree to keep the contents confidential

About Ithell Colquhoun

Ithell Colquhoun (1906–1988) was a British painter, writer, and occultist primarily known for her contributions to the Surrealist movement.

Born in Shillong, India, she moved to England at a young age and attended the Slade School of Fine Art in London.

The Cubist and abstract movements influenced her early works, but she soon aligned herself with Surrealism, engaging deeply with its focus on the unconscious and the dream state.

Despite her contributions, Colquhoun was marginalized within the male-dominated Surrealist circles, leading her to pursue her own path.

She became increasingly interested in mysticism and the occult, incorporating esoteric themes like alchemy, tarot, and the Kabbalah into her works. These interests were not only reflected in her paintings but also in her writings, which included poetry and books on the occult.

Her art and writings offered a synthesis of mystical traditions, visual imagery, and feminine spirituality. Over the years, Colquhoun's work has been the subject of renewed academic and commercial interest, particularly with the focus on gender diversity in art history and the increasing cultural relevance of mystical and esoteric themes.

Her oeuvre serves as an enduring exploration of the intersection between art, spirituality, and the unconscious.